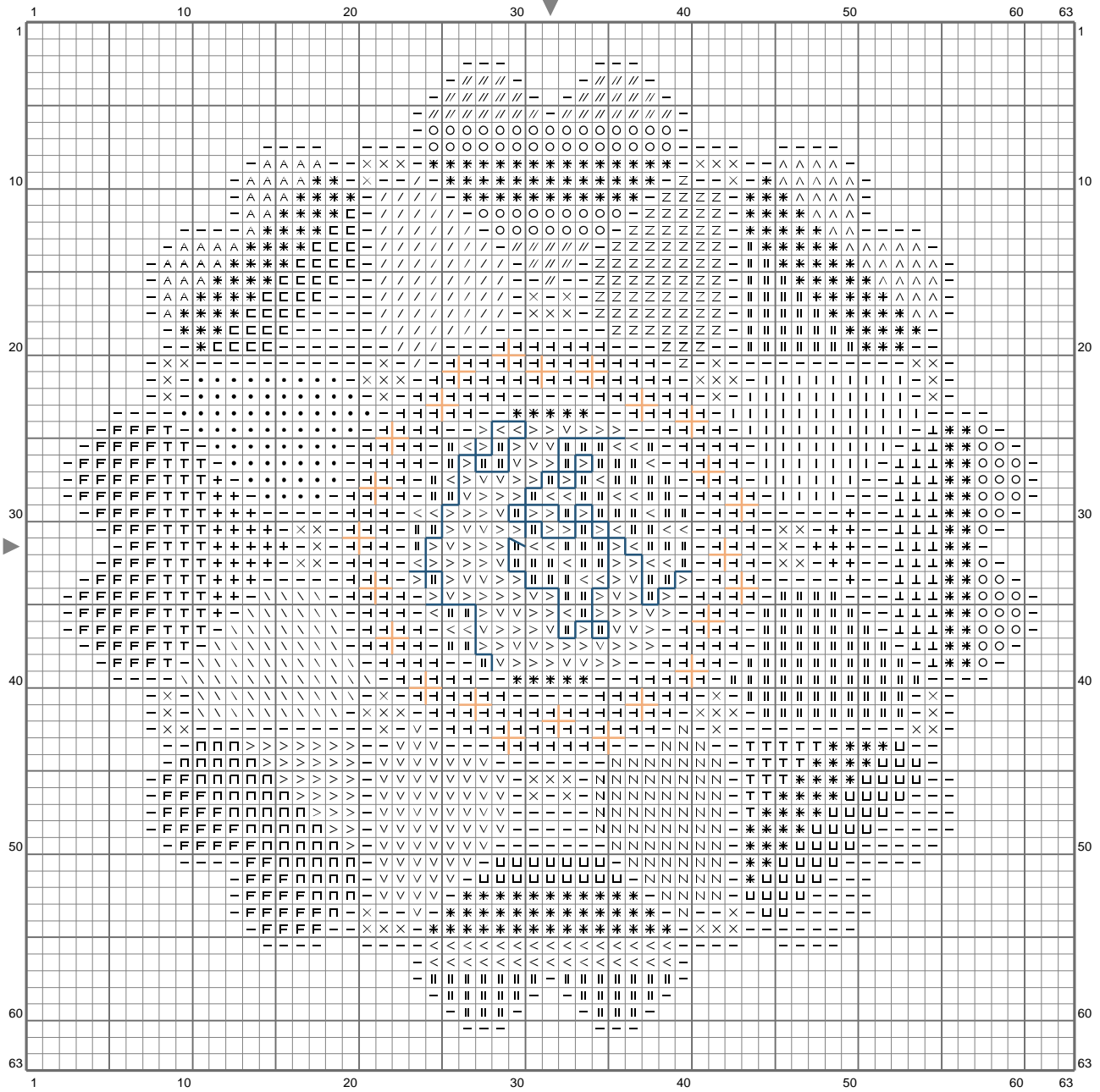


Pride Hearts



Pride Hearts

Stitch Count: 63w x 63h
Finished Size: 8.89 cm x 8.89 cm (18 ct./inch)
Cloth: Aida
Cloth's Color: White
of colors: 25 Colors

Color Table (DMC)

Cross Stitch

✳	BLANC	(232 ct)
⊔	208	(54 ct)
⊓	209	(30 ct)
△	210	(37 ct)
▲	307	(28 ct)
▬	310	(600 ct)
▮	444	(46 ct)
▯	647	(54 ct)
∕	666	(66 ct)
◁	703	(61 ct)
⊥	726	(66 ct)
⊏	740	(66 ct)
⊞	824	(220 ct)
⊞	891	(97 ct)
⊞	905	(195 ct)
⊞	917	(39 ct)
●	956	(66 ct)
×	977	(72 ct)
▽	995	(97 ct)
▷	996	(110 ct)
○	3708	(76 ct)
∖	3837	(66 ct)
+	3842	(34 ct)
⊞	3845	(66 ct)
//	3846	(39 ct)

Backstitch

⌞	977	(48 ct)
⌞	3842	(63 ct)